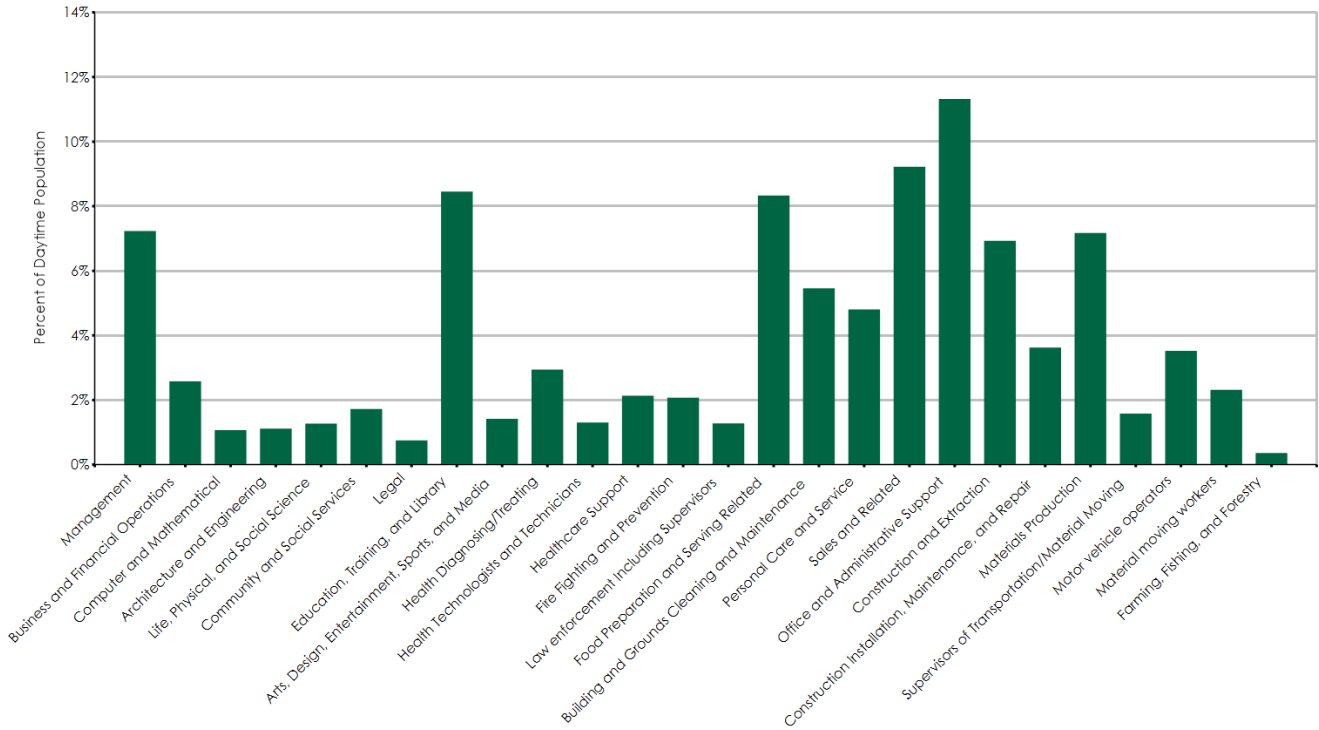


| Segment | Count | Percent |
|--|---------------|---------------|
| Management | 7,169 | 7.2% |
| Business and Financial Operations | 2,557 | 2.6% |
| Computer and Mathematical | 1,061 | 1.1% |
| Architecture and Engineering | 1,108 | 1.1% |
| Life, Physical, and Social Science | 1,262 | 1.3% |
| Community and Social Services | 1,710 | 1.7% |
| Legal | 744 | 0.8% |
| Education, Training, and Library | 8,376 | 8.5% |
| Arts, Design, Entertainment, Sports, and Media | 1,405 | 1.4% |
| Health Diagnosing/Treating | 2,918 | 2.9% |
| Health Technologists and Technicians | 1,292 | 1.3% |
| Healthcare Support | 2,117 | 2.1% |
| Fire Fighting and Prevention | 2,057 | 2.1% |
| Law enforcement Including Supervisors | 1,266 | 1.3% |
| Food Preparation and Serving Related | 8,256 | 8.3% |
| Building and Grounds Cleaning and Maintenance | 5,408 | 5.5% |
| Personal Care and Service | 4,762 | 4.8% |
| Sales and Related | 9,136 | 9.2% |
| Office and Administrative Support | 11,212 | 11.3% |
| Construction and Extraction | 6,864 | 6.9% |
| Construction Installation, Maintenance, and Repair | 3,590 | 3.6% |
| Materials Production | 7,105 | 7.2% |
| Supervisors of Transportation/Material Moving | 1,564 | 1.6% |
| Motor vehicle operators | 3,494 | 3.5% |
| Material moving workers | 2,293 | 2.3% |
| Farming, Fishing, and Forestry | 355 | 0.4% |
| Total Daytime Population | 99,081 | 100.0% |

Data Source: Dun & Bradstreet Business Table Last Update: March 28, 2019

All estimates, projections or forecasts in this report are subject to errors, including statistical error, error due to the subjective nature of some data, error due to changes in demographics, error based on lagging competitor information or growth data, and error due to factors that are not included in the model. The user assumes all risk of reliance on this information.



Data Source: Dun & Bradstreet Business Table Last Update: March 28, 2019

All estimates, projections or forecasts in this report are subject to errors, including statistical error, error due to the subjective nature of some data, error due to changes in demographics, error based on lagging competitor information or growth data, and error due to factors that are not included in the model. The user assumes all risk of reliance on this information.

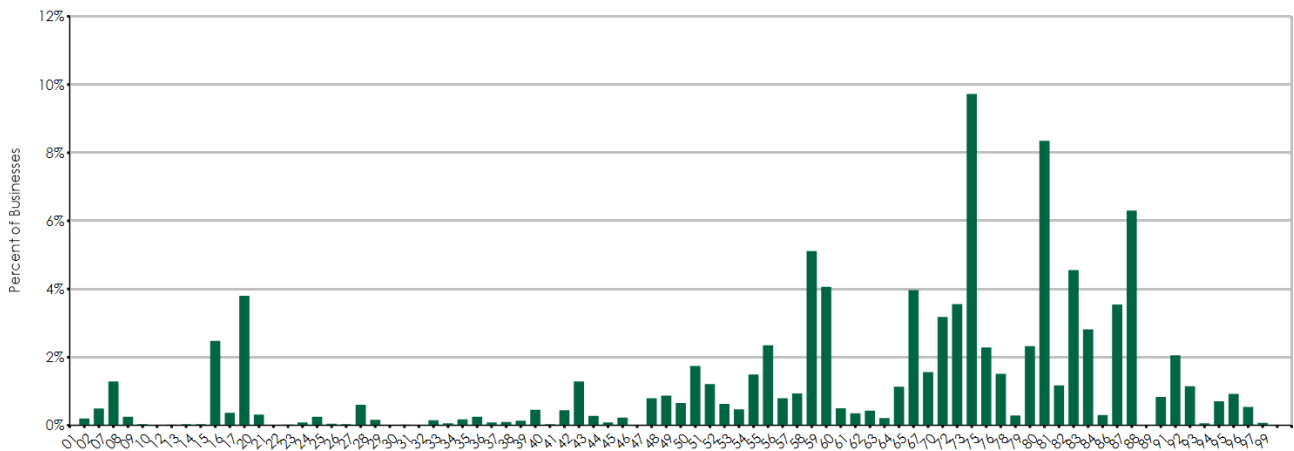
| Employee Count | Count of Businesses |
|----------------|---------------------|
| 0 - 50 | 7,575 |
| 51 - 100 | 214 |
| 101 - 200 | 78 |
| 201 - 300 | 19 |
| 300+ | 31 |
| Total | 7,917 |

| 2-Digit SIC | Business Description | 0-50 Emp. | 51-100 Emp. | 101-200 Emp. | 201-300 Emp. | 300+ Emp. | Total |
|-------------|--|-----------|-------------|--------------|--------------|-----------|-------|
| 01 | Agricultural Production-Crops | 16 | 0 | 0 | 0 | 0 | 16 |
| 02 | Agricultural Production-Livestock | 39 | 0 | 0 | 0 | 0 | 39 |
| 07 | Agricultural Services | 102 | 0 | 0 | 0 | 0 | 102 |
| 08 | Forestry | 20 | 0 | 0 | 0 | 0 | 20 |
| 09 | Fishing, Hunting & Trapping | 3 | 0 | 0 | 0 | 0 | 3 |
| 10 | Metal Mining | 0 | 0 | 0 | 0 | 0 | 0 |
| 12 | Coal Mining | 0 | 0 | 1 | 0 | 1 | 2 |
| 13 | Oil & Gas Extraction | 3 | 0 | 0 | 0 | 0 | 3 |
| 14 | Mining & Quarrying-Nonmetallic Minerals | 2 | 1 | 0 | 0 | 0 | 3 |
| 15 | Building Construction-Gen Contractors | 195 | 1 | 0 | 0 | 0 | 196 |
| 16 | Heavy Construction Except Building | 28 | 1 | 0 | 0 | 0 | 29 |
| 17 | Construction-Special Trade Contractors | 297 | 4 | 0 | 0 | 0 | 301 |
| 20 | Food & Kindred Products Mfrs | 21 | 3 | 1 | 0 | 0 | 25 |
| 21 | Tobacco Products Mfrs | 0 | 0 | 0 | 0 | 0 | 0 |
| 22 | Textile Mill Products Mfrs | 2 | 0 | 0 | 0 | 0 | 2 |
| 23 | Apparel & Other Finished Products Mfrs | 7 | 0 | 0 | 0 | 0 | 7 |
| 24 | Lumber & Wood Prods Except Furntr Mfrs | 20 | 0 | 0 | 0 | 0 | 20 |
| 25 | Furniture & Fixtures Mfrs | 4 | 0 | 0 | 0 | 0 | 4 |
| 26 | Paper & Allied Products Mfrs | 2 | 0 | 1 | 0 | 0 | 3 |
| 27 | Printing Publishing & Allied Industries | 47 | 0 | 1 | 0 | 0 | 48 |
| 28 | Chemicals & Allied Products Mfrs | 12 | 1 | 0 | 0 | 0 | 13 |
| 29 | Petroleum Refining & Related Inds Mfrs | 1 | 0 | 0 | 0 | 0 | 1 |
| 30 | Rubber & Miscellaneous Plastics Mfrs | 1 | 1 | 0 | 0 | 0 | 2 |
| 31 | Leather & Leather Products Mfrs | 0 | 0 | 0 | 0 | 0 | 0 |
| 32 | Stone Clay Glass & Concrete Prods Mfrs | 10 | 2 | 0 | 0 | 0 | 12 |
| 33 | Primary Metal Industries Mfrs | 3 | 1 | 1 | 0 | 0 | 5 |
| 34 | Fabricated Metal Products Mfrs | 14 | 0 | 0 | 0 | 0 | 14 |
| 35 | Industrial & Commercial Machinery Mfrs | 19 | 1 | 0 | 0 | 0 | 20 |
| 36 | Electronic & Other Electrical Equip Mfrs | 5 | 2 | 0 | 0 | 0 | 7 |
| 37 | Transportation Equipment Mfrs | 8 | 0 | 0 | 0 | 0 | 8 |
| 38 | Measuring & Analyzing Instruments Mfrs | 11 | 0 | 0 | 0 | 0 | 11 |
| 39 | Miscellaneous Manufacturing Inds Mfrs | 35 | 1 | 0 | 0 | 0 | 36 |
| 40 | Railroad Transportation | 3 | 0 | 0 | 0 | 0 | 3 |
| 41 | Local/Suburban Transit & Hwy Passenger | 32 | 2 | 0 | 0 | 1 | 35 |
| 42 | Motor Freight Transportation/Warehouse | 100 | 1 | 1 | 0 | 0 | 102 |
| 43 | United States Postal Service | 21 | 0 | 1 | 0 | 0 | 22 |
| 44 | Water Transportation | 7 | 0 | 0 | 0 | 0 | 7 |
| 45 | Transportation By Air | 17 | 1 | 0 | 0 | 0 | 18 |
| 46 | Pipelines Except Natural Gas | 1 | 0 | 0 | 0 | 0 | 1 |
| 47 | Transportation Services | 61 | 1 | 1 | 0 | 0 | 63 |
| 48 | Communications | 68 | 1 | 0 | 0 | 0 | 69 |
| 49 | Electric Gas & Sanitary Services | 49 | 1 | 1 | 0 | 1 | 52 |
| 50 | Wholesale Trade-Durable Goods | 137 | 0 | 0 | 0 | 1 | 138 |
| 51 | Wholesale Trade-Nondurable Goods | 93 | 1 | 2 | 0 | 0 | 96 |
| 52 | Building Materials & Hardware | 46 | 2 | 2 | 0 | 0 | 50 |
| 53 | General Merchandise Stores | 28 | 2 | 5 | 2 | 0 | 37 |
| 54 | Food Stores | 102 | 14 | 2 | 0 | 0 | 118 |
| 55 | Automotive Dealers & Service Stations | 184 | 2 | 0 | 0 | 0 | 186 |
| 56 | Apparel & Accessory Stores | 62 | 1 | 0 | 0 | 0 | 63 |

Data Source: Dun & Bradstreet Business Table Last Update: March 28, 2019

All estimates, projections or forecasts in this report are subject to errors, including statistical error, error due to the subjective nature of some data, error due to changes in demographics, error based on lagging competitor information or growth data, and error due to factors that are not included in the model. The user assumes all risk of reliance on this information.

| 2-Digit SIC | Business Description | 0-50 Emp. | 51-100 Emp. | 101-200 Emp. | 201-300 Emp. | 300+ Emp. | Total |
|-------------|--|-----------|-------------|--------------|--------------|-----------|-------|
| 57 | Home Furniture & Furnishings Stores | 73 | 1 | 0 | 0 | 0 | 74 |
| 58 | Eating & Drinking Places | 388 | 12 | 3 | 1 | 1 | 405 |
| 59 | Miscellaneous Retail | 320 | 1 | 0 | 0 | 1 | 322 |
| 60 | Depository Institutions | 39 | 1 | 0 | 0 | 0 | 40 |
| 61 | Nondepository Credit Institutions | 28 | 0 | 0 | 0 | 0 | 28 |
| 62 | Security & Commodity Brokers | 34 | 0 | 0 | 0 | 0 | 34 |
| 63 | Insurance Carriers | 17 | 0 | 0 | 0 | 0 | 17 |
| 64 | Insurance Agents Brokers & Service | 90 | 0 | 0 | 0 | 0 | 90 |
| 65 | Real Estate | 312 | 2 | 0 | 0 | 0 | 314 |
| 67 | Holding & Other Investment Offices | 124 | 0 | 0 | 0 | 0 | 124 |
| 70 | Hotels Rooming Houses & Camps | 234 | 12 | 3 | 0 | 3 | 252 |
| 72 | Personal Services | 282 | 0 | 0 | 0 | 0 | 282 |
| 73 | Business Services | 768 | 2 | 0 | 0 | 0 | 770 |
| 75 | Auto Repair Services & Parking | 181 | 0 | 0 | 0 | 0 | 181 |
| 76 | Miscellaneous Repair Services | 120 | 0 | 0 | 0 | 0 | 120 |
| 78 | Motion Pictures | 22 | 1 | 0 | 0 | 0 | 23 |
| 79 | Amusement & Recreation Services | 172 | 7 | 1 | 2 | 2 | 184 |
| 80 | Health Services | 630 | 9 | 10 | 8 | 4 | 661 |
| 81 | Legal Services | 93 | 0 | 0 | 0 | 0 | 93 |
| 82 | Educational Services | 265 | 73 | 18 | 1 | 4 | 361 |
| 83 | Social Services | 210 | 6 | 4 | 1 | 2 | 223 |
| 84 | Museums Art Galleries & Gardens | 24 | 0 | 0 | 0 | 0 | 24 |
| 86 | Membership Organizations | 278 | 1 | 1 | 0 | 1 | 281 |
| 87 | Engineering & Accounting & Mgmt Svcs | 491 | 5 | 1 | 0 | 2 | 499 |
| 88 | Private Households | 0 | 0 | 0 | 0 | 0 | 0 |
| 89 | Miscellaneous Services Nec | 66 | 0 | 0 | 0 | 0 | 66 |
| 91 | Executive, Legislative, & General Govt, Except Finance | 149 | 9 | 2 | 1 | 2 | 163 |
| 92 | Justice, Public Order, & Safety | 80 | 7 | 3 | 0 | 1 | 91 |
| 93 | Public Finance, Taxation, & Monetary Policy | 5 | 0 | 0 | 0 | 0 | 5 |
| 94 | Administration Of Human Resource Programs | 41 | 5 | 6 | 2 | 2 | 56 |
| 95 | Administration Of Environmental Quality & Housing Programs | 59 | 9 | 5 | 0 | 0 | 73 |
| 96 | Administration Of Economic Programs | 37 | 3 | 1 | 0 | 2 | 43 |
| 97 | National Security & International Affairs | 5 | 0 | 0 | 1 | 0 | 6 |
| 99 | Nonclassifiable Establishments | 0 | 0 | 0 | 0 | 0 | 0 |



Data Source: Dun & Bradstreet Business Table Last Update: March 28, 2019

All estimates, projections or forecasts in this report are subject to errors, including statistical error, error due to the subjective nature of some data, error due to changes in demographics, error based on lagging competitor information or growth data, and error due to factors that are not included in the model. The user assumes all risk of reliance on this information.