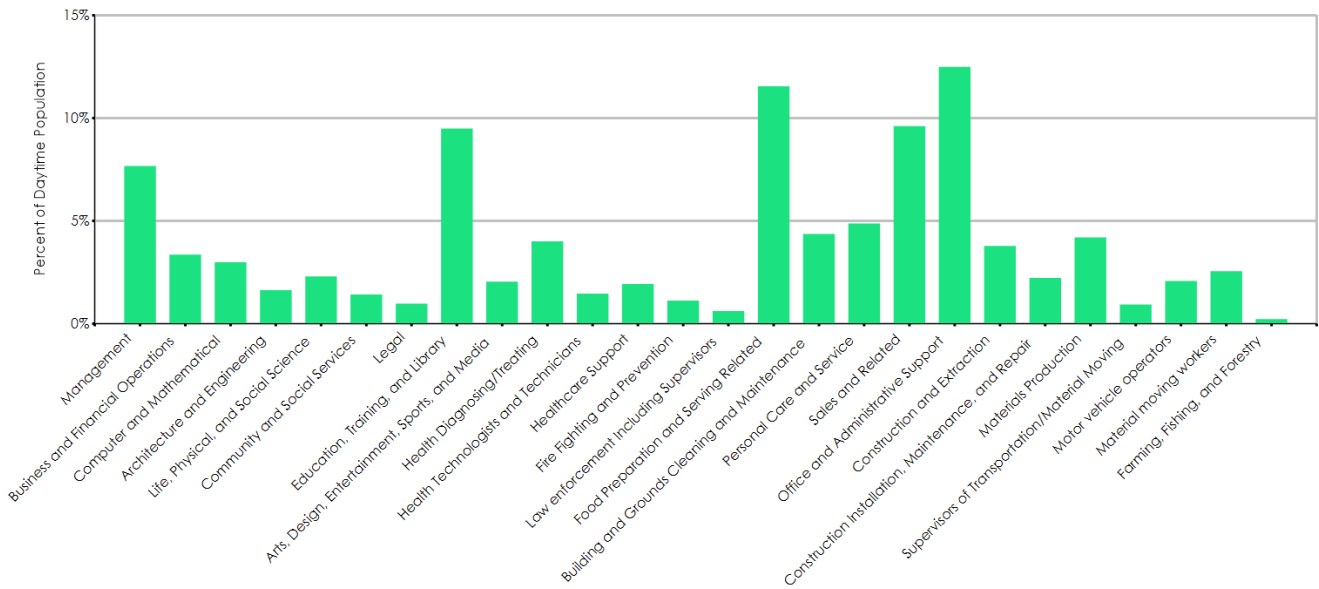


Segment	Count	Percent
Management	3,216	7.7%
Business and Financial Operations	1,407	3.4%
Computer and Mathematical	1,254	3.0%
Architecture and Engineering	684	1.6%
Life, Physical, and Social Science	965	2.3%
Community and Social Services	599	1.4%
Legal	409	1.0%
Education, Training, and Library	3,980	9.5%
Arts, Design, Entertainment, Sports, and Media	858	2.0%
Health Diagnosing/Treating	1,681	4.0%
Health Technologists and Technicians	613	1.5%
Healthcare Support	809	1.9%
Fire Fighting and Prevention	471	1.1%
Law enforcement Including Supervisors	257	0.6%
Food Preparation and Serving Related	4,840	11.6%
Building and Grounds Cleaning and Maintenance	1,829	4.4%
Personal Care and Service	2,043	4.9%
Sales and Related	4,027	9.6%
Office and Administrative Support	5,233	12.5%
Construction and Extraction	1,586	3.8%
Construction Installation, Maintenance, and Repair	932	2.2%
Materials Production	1,761	4.2%
Supervisors of Transportation/Material Moving	391	0.9%
Motor vehicle operators	870	2.1%
Material moving workers	1,074	2.6%
Farming, Fishing, and Forestry	96	0.2%
Total Employees	41,885	100.0%



Data Source: Dun & Bradstreet Business Table Last Update: September 16, 2022

All estimates, projections or forecasts in this report are subject to errors, including statistical error, error due to the subjective nature of some data, error due to changes in demographics, error based on lagging competitor information or growth data, and error due to factors that are not included in the model. The user assumes all risk of reliance on this information. Powered by Alteryx®.

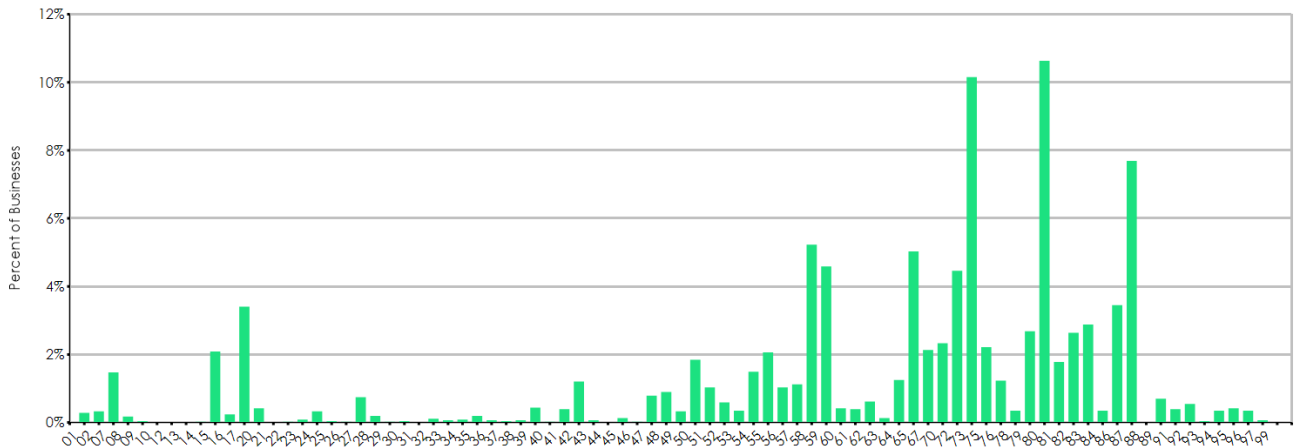
Employee Count	Count of Businesses
0 - 50	4,445
51 - 100	58
101 - 200	30
201 - 300	8
300+	10
Total	4,551

2-Digit SIC	Business Description	0-50 Emp.	51-100 Emp.	101-200 Emp.	201-300 Emp.	300+ Emp.	Total
01	Agricultural Production-Crops	13	0	0	0	0	13
02	Agricultural Production-Livestock	15	0	0	0	0	15
07	Agricultural Services	66	1	0	0	0	67
08	Forestry	8	0	0	0	0	8
09	Fishing, Hunting & Trapping	2	0	0	0	0	2
10	Metal Mining	0	0	0	0	0	0
12	Coal Mining	0	0	0	0	0	0
13	Oil & Gas Extraction	0	0	0	0	0	0
14	Mining & Quarrying-Nonmetallic Minerals	1	0	0	0	0	1
15	Building Construction-Gen Contractors	94	1	0	0	0	95
16	Heavy Construction Except Building	10	1	0	0	0	11
17	Construction-Special Trade Contractors	153	2	0	0	0	155
20	Food & Kindred Products Mfrs	17	0	1	0	1	19
21	Tobacco Products Mfrs	0	0	0	0	0	0
22	Textile Mill Products Mfrs	1	0	0	0	0	1
23	Apparel & Other Finished Products Mfrs	4	0	0	0	0	4
24	Lumber & Wood Prods Except Furntr Mfrs	15	0	0	0	0	15
25	Furniture & Fixtures Mfrs	2	0	0	0	0	2
26	Paper & Allied Products Mfrs	1	0	0	0	0	1
27	Printing Publishing & Allied Industries	34	0	0	0	0	34
28	Chemicals & Allied Products Mfrs	8	1	0	0	0	9
29	Petroleum Refining & Related Inds Mfrs	1	0	0	0	0	1
30	Rubber & Miscellaneous Plastics Mfrs	2	0	0	0	0	2
31	Leather & Leather Products Mfrs	0	0	0	0	0	0
32	Stone Clay Glass & Concrete Prods Mfrs	5	0	0	0	0	5
33	Primary Metal Industries Mfrs	1	1	1	0	0	3
34	Fabricated Metal Products Mfrs	4	0	0	0	0	4
35	Industrial & Commercial Machinery Mfrs	8	1	0	0	0	9
36	Electronic & Other Electrical Equip Mfrs	2	1	0	0	0	3
37	Transportation Equipment Mfrs	2	0	0	0	0	2
38	Measuring & Analyzing Instruments Mfrs	3	0	0	0	0	3
39	Miscellaneous Manufacturing Inds Mfrs	20	0	0	0	0	20
40	Railroad Transportation	1	0	0	0	0	1
41	Local/Suburban Transit & Hwy Passenger	18	0	0	0	0	18
42	Motor Freight Transportation/Warehouse	53	1	1	0	0	55
43	United States Postal Service	2	0	0	1	0	3
44	Water Transportation	0	0	0	0	0	0
45	Transportation By Air	6	0	0	0	0	6
46	Pipelines Except Natural Gas	1	0	0	0	0	1
47	Transportation Services	35	0	1	0	0	36
48	Communications	39	1	1	0	0	41
49	Electric Gas & Sanitary Services	15	0	0	0	0	15
50	Wholesale Trade-Durable Goods	84	0	0	0	0	84
51	Wholesale Trade-Nondurable Goods	46	0	0	0	1	47
52	Building Materials & Hardware	25	1	1	0	0	27
53	General Merchandise Stores	13	3	0	0	0	16
54	Food Stores	63	4	1	0	0	68
55	Automotive Dealers & Service Stations	93	1	0	0	0	94
56	Apparel & Accessory Stores	46	1	0	0	0	47
57	Home Furniture & Furnishings Stores	51	0	0	0	0	51

Data Source: Dun & Bradstreet Business Table Last Update: September 16, 2022

All estimates, projections or forecasts in this report are subject to errors, including statistical error, error due to the subjective nature of some data, error due to changes in demographics, error based on lagging competitor information or growth data, and error due to factors that are not included in the model. The user assumes all risk of reliance on this information. Powered by Alteryx®.

2-Digit SIC	Business Description	0-50 Emp.	51-100 Emp.	101-200 Emp.	201-300 Emp.	300+ Emp.	Total
58	Eating & Drinking Places	232	4	2	0	0	238
59	Miscellaneous Retail	208	1	0	0	0	209
60	Depository Institutions	19	0	0	0	0	19
61	Nondepository Credit Institutions	18	0	0	0	0	18
62	Security & Commodity Brokers	28	0	0	0	0	28
63	Insurance Carriers	6	0	0	0	0	6
64	Insurance Agents Brokers & Service	57	0	0	0	0	57
65	Real Estate	228	1	0	0	0	229
67	Holding & Other Investment Offices	97	0	0	0	0	97
70	Hotels Rooming Houses & Camps	103	2	1	0	0	106
72	Personal Services	203	0	0	0	0	203
73	Business Services	461	1	0	0	0	462
75	Auto Repair Services & Parking	101	0	0	0	0	101
76	Miscellaneous Repair Services	56	0	0	0	0	56
78	Motion Pictures	16	0	0	0	0	16
79	Amusement & Recreation Services	117	4	1	0	0	122
80	Health Services	472	6	3	1	2	484
81	Legal Services	81	0	0	0	0	81
82	Educational Services	98	7	9	3	3	120
83	Social Services	124	3	2	0	2	131
84	Museums Art Galleries & Gardens	16	0	0	0	0	16
86	Membership Organizations	156	1	0	0	0	157
87	Engineering & Accounting & Mgmt Svcs	348	1	1	0	0	350
88	Private Households	0	0	0	0	0	0
89	Miscellaneous Services Nec	32	0	0	0	0	32
91	Executive, Legislative, & General Govt, Except Finance	16	1	1	0	0	18
92	Justice, Public Order, & Safety	23	1	0	1	0	25
93	Public Finance, Taxation, & Monetary Policy	2	0	0	0	0	2
94	Administration Of Human Resource Programs	12	1	2	1	0	16
95	Administration Of Environmental Quality & Housing Programs	17	2	0	0	0	19
96	Administration Of Economic Programs	13	1	1	0	1	16
97	National Security & International Affairs	2	0	0	1	0	3
99	Nonclassifiable Establishments	0	0	0	0	0	0



Data Source: Dun & Bradstreet Business Table Last Update: September 16, 2022

All estimates, projections or forecasts in this report are subject to errors, including statistical error, error due to the subjective nature of some data, error due to changes in demographics, error based on lagging competitor information or growth data, and error due to factors that are not included in the model. The user assumes all risk of reliance on this information. Powered by Alteryx®.