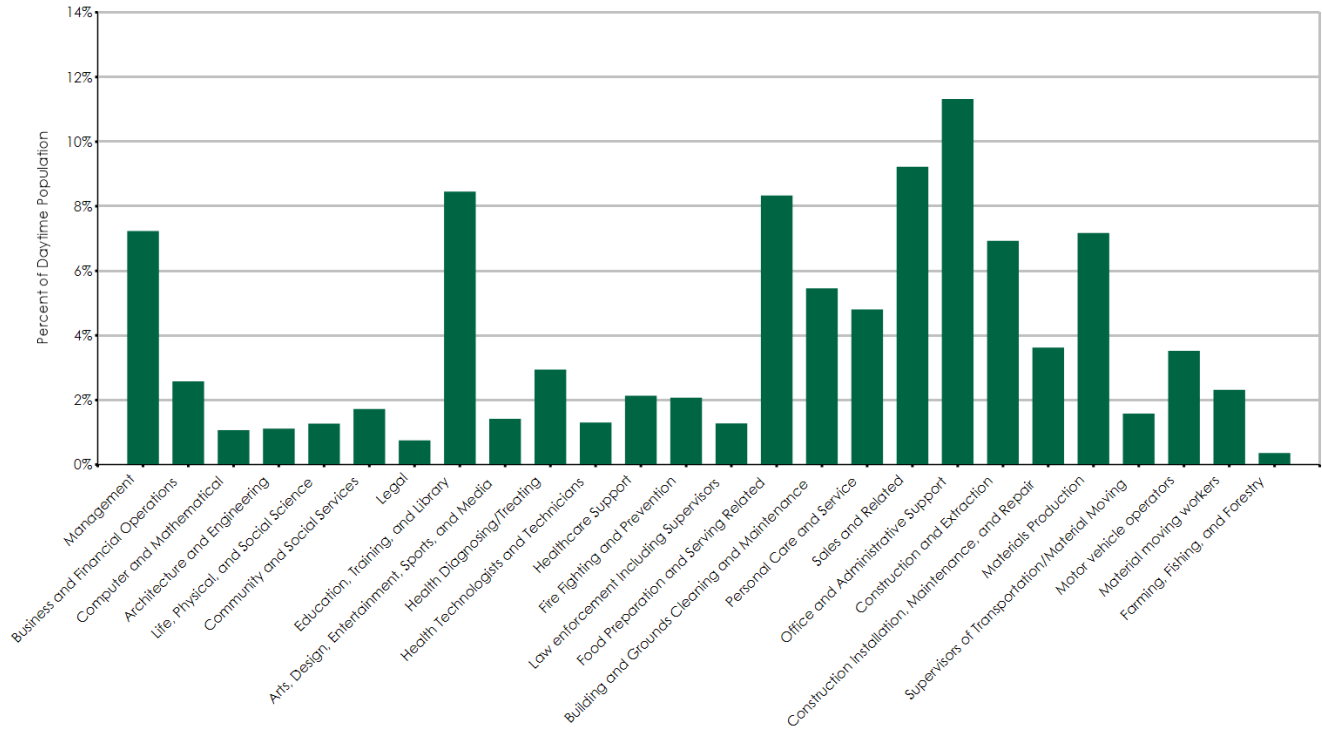


Segment	Count	Percent
Management	7,169	7.2%
Business and Financial Operations	2,557	2.6%
Computer and Mathematical	1,061	1.1%
Architecture and Engineering	1,108	1.1%
Life, Physical, and Social Science	1,262	1.3%
Community and Social Services	1,710	1.7%
Legal	744	0.8%
Education, Training, and Library	8,376	8.5%
Arts, Design, Entertainment, Sports, and Media	1,405	1.4%
Health Diagnosing/Treating	2,918	2.9%
Health Technologists and Technicians	1,292	1.3%
Healthcare Support	2,117	2.1%
Fire Fighting and Prevention	2,057	2.1%
Law enforcement Including Supervisors	1,266	1.3%
Food Preparation and Serving Related	8,256	8.3%
Building and Grounds Cleaning and Maintenance	5,408	5.5%
Personal Care and Service	4,762	4.8%
Sales and Related	9,136	9.2%
Office and Administrative Support	11,212	11.3%
Construction and Extraction	6,864	6.9%
Construction Installation, Maintenance, and Repair	3,590	3.6%
Materials Production	7,105	7.2%
Supervisors of Transportation/Material Moving	1,564	1.6%
Motor vehicle operators	3,494	3.5%
Material moving workers	2,293	2.3%
Farming, Fishing, and Forestry	355	0.4%
Total Daytime Population	99,081	100.0%

Data Source: Dun & Bradstreet Business Table Last Update: March 28, 2019

All estimates, projections or forecasts in this report are subject to errors, including statistical error, error due to the subjective nature of some data, error due to changes in demographics, error based on lagging competitor information or growth data, and error due to factors that are not included in the model. The user assumes all risk of reliance on this information.



Data Source: Dun & Bradstreet Business Table Last Update: March 28, 2019

All estimates, projections or forecasts in this report are subject to errors, including statistical error, error due to the subjective nature of some data, error due to changes in demographics, error based on lagging competitor information or growth data, and error due to factors that are not included in the model. The user assumes all risk of reliance on this information.

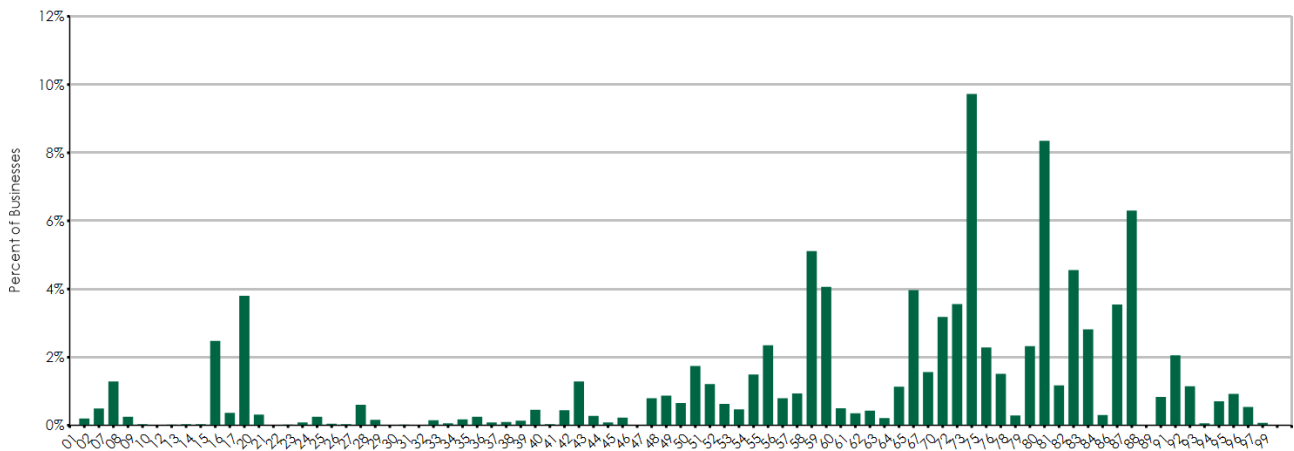
Employee Count	Count of Businesses
0 - 50	7,575
51 - 100	214
101 - 200	78
201 - 300	19
300+	31
Total	7,917

2-Digit SIC	Business Description	0-50 Emp.	51-100 Emp.	101-200 Emp.	201-300 Emp.	300+ Emp.	Total
01	Agricultural Production-Crops	16	0	0	0	0	16
02	Agricultural Production-Livestock	39	0	0	0	0	39
07	Agricultural Services	102	0	0	0	0	102
08	Forestry	20	0	0	0	0	20
09	Fishing, Hunting & Trapping	3	0	0	0	0	3
10	Metal Mining	0	0	0	0	0	0
12	Coal Mining	0	0	1	0	1	2
13	Oil & Gas Extraction	3	0	0	0	0	3
14	Mining & Quarrying-Nonmetallic Minerals	2	1	0	0	0	3
15	Building Construction-Gen Contractors	195	1	0	0	0	196
16	Heavy Construction Except Building	28	1	0	0	0	29
17	Construction-Special Trade Contractors	297	4	0	0	0	301
20	Food & Kindred Products Mfrs	21	3	1	0	0	25
21	Tobacco Products Mfrs	0	0	0	0	0	0
22	Textile Mill Products Mfrs	2	0	0	0	0	2
23	Apparel & Other Finished Products Mfrs	7	0	0	0	0	7
24	Lumber & Wood Prods Except Furntr Mfrs	20	0	0	0	0	20
25	Furniture & Fixtures Mfrs	4	0	0	0	0	4
26	Paper & Allied Products Mfrs	2	0	1	0	0	3
27	Printing Publishing & Allied Industries	47	0	1	0	0	48
28	Chemicals & Allied Products Mfrs	12	1	0	0	0	13
29	Petroleum Refining & Related Inds Mfrs	1	0	0	0	0	1
30	Rubber & Miscellaneous Plastics Mfrs	1	1	0	0	0	2
31	Leather & Leather Products Mfrs	0	0	0	0	0	0
32	Stone Clay Glass & Concrete Prods Mfrs	10	2	0	0	0	12
33	Primary Metal Industries Mfrs	3	1	1	0	0	5
34	Fabricated Metal Products Mfrs	14	0	0	0	0	14
35	Industrial & Commercial Machinery Mfrs	19	1	0	0	0	20
36	Electronic & Other Electrical Equip Mfrs	5	2	0	0	0	7
37	Transportation Equipment Mfrs	8	0	0	0	0	8
38	Measuring & Analyzing Instruments Mfrs	11	0	0	0	0	11
39	Miscellaneous Manufacturing Inds Mfrs	35	1	0	0	0	36
40	Railroad Transportation	3	0	0	0	0	3
41	Local/Suburban Transit & Hwy Passenger	32	2	0	0	1	35
42	Motor Freight Transportation/Warehouse	100	1	1	0	0	102
43	United States Postal Service	21	0	1	0	0	22
44	Water Transportation	7	0	0	0	0	7
45	Transportation By Air	17	1	0	0	0	18
46	Pipelines Except Natural Gas	1	0	0	0	0	1
47	Transportation Services	61	1	1	0	0	63
48	Communications	68	1	0	0	0	69
49	Electric Gas & Sanitary Services	49	1	1	0	1	52
50	Wholesale Trade-Durable Goods	137	0	0	0	1	138
51	Wholesale Trade-Nondurable Goods	93	1	2	0	0	96
52	Building Materials & Hardware	46	2	2	0	0	50
53	General Merchandise Stores	28	2	5	2	0	37
54	Food Stores	102	14	2	0	0	118
55	Automotive Dealers & Service Stations	184	2	0	0	0	186
56	Apparel & Accessory Stores	62	1	0	0	0	63

Data Source: Dun & Bradstreet Business Table Last Update: March 28, 2019

All estimates, projections or forecasts in this report are subject to errors, including statistical error, error due to the subjective nature of some data, error due to changes in demographics, error based on lagging competitor information or growth data, and error due to factors that are not included in the model. The user assumes all risk of reliance on this information.

2-Digit SIC	Business Description	0-50 Emp.	51-100 Emp.	101-200 Emp.	201-300 Emp.	300+ Emp.	Total
57	Home Furniture & Furnishings Stores	73	1	0	0	0	74
58	Eating & Drinking Places	388	12	3	1	1	405
59	Miscellaneous Retail	320	1	0	0	1	322
60	Depository Institutions	39	1	0	0	0	40
61	Nondepository Credit Institutions	28	0	0	0	0	28
62	Security & Commodity Brokers	34	0	0	0	0	34
63	Insurance Carriers	17	0	0	0	0	17
64	Insurance Agents Brokers & Service	90	0	0	0	0	90
65	Real Estate	312	2	0	0	0	314
67	Holding & Other Investment Offices	124	0	0	0	0	124
70	Hotels Rooming Houses & Camps	234	12	3	0	3	252
72	Personal Services	282	0	0	0	0	282
73	Business Services	768	2	0	0	0	770
75	Auto Repair Services & Parking	181	0	0	0	0	181
76	Miscellaneous Repair Services	120	0	0	0	0	120
78	Motion Pictures	22	1	0	0	0	23
79	Amusement & Recreation Services	172	7	1	2	2	184
80	Health Services	630	9	10	8	4	661
81	Legal Services	93	0	0	0	0	93
82	Educational Services	265	73	18	1	4	361
83	Social Services	210	6	4	1	2	223
84	Museums Art Galleries & Gardens	24	0	0	0	0	24
86	Membership Organizations	278	1	1	0	1	281
87	Engineering & Accounting & Mgmt Svcs	491	5	1	0	2	499
88	Private Households	0	0	0	0	0	0
89	Miscellaneous Services Nec	66	0	0	0	0	66
91	Executive, Legislative, & General Govt, Except Finance	149	9	2	1	2	163
92	Justice, Public Order, & Safety	80	7	3	0	1	91
93	Public Finance, Taxation, & Monetary Policy	5	0	0	0	0	5
94	Administration Of Human Resource Programs	41	5	6	2	2	56
95	Administration Of Environmental Quality & Housing Programs	59	9	5	0	0	73
96	Administration Of Economic Programs	37	3	1	0	2	43
97	National Security & International Affairs	5	0	0	1	0	6
99	Nonclassifiable Establishments	0	0	0	0	0	0



Data Source: Dun & Bradstreet Business Table Last Update: March 28, 2019

All estimates, projections or forecasts in this report are subject to errors, including statistical error, error due to the subjective nature of some data, error due to changes in demographics, error based on lagging competitor information or growth data, and error due to factors that are not included in the model. The user assumes all risk of reliance on this information.