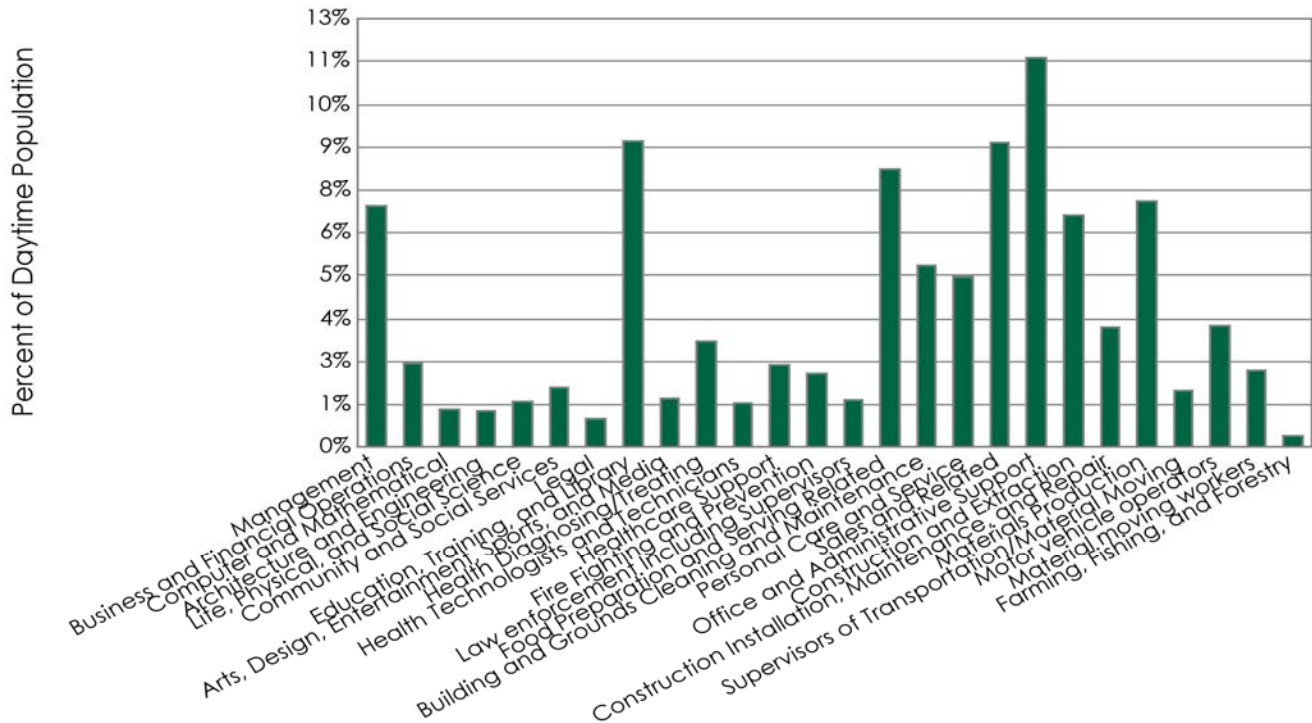


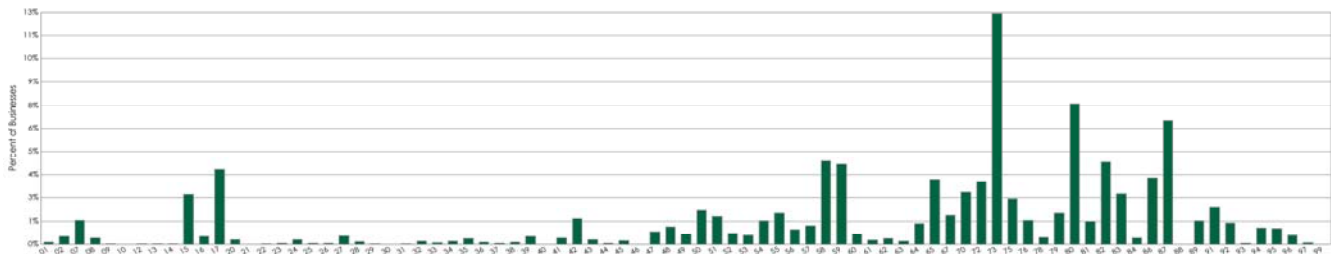
Segment	Count	Percent
Management	6,366	7.0%
Business and Financial Operations	2,250	2.5%
Computer and Mathematical	992	1.1%
Architecture and Engineering	960	1.1%
Life, Physical, and Social Science	1,211	1.3%
Community and Social Services	1,565	1.7%
Legal	754	0.8%
Education, Training, and Library	8,113	8.9%
Arts, Design, Entertainment, Sports, and Media	1,283	1.4%
Health Diagnosing/Treating	2,808	3.1%
Health Technologists and Technicians	1,177	1.3%
Healthcare Support	2,177	2.4%
Fire Fighting and Prevention	1,949	2.1%
Law enforcement Including Supervisors	1,244	1.4%
Food Preparation and Serving Related	7,374	8.1%
Building and Grounds Cleaning and Maintenance	4,802	5.3%
Personal Care and Service	4,509	5.0%
Sales and Related	8,058	8.9%
Office and Administrative Support	10,321	11.4%
Construction and Extraction	6,138	6.8%
Construction Installation, Maintenance, and Repair	3,182	3.5%
Materials Production	6,483	7.1%
Supervisors of Transportation/Material Moving	1,472	1.6%
Motor vehicle operators	3,216	3.5%
Material moving workers	2,040	2.2%
Farming, Fishing, and Forestry	292	0.3%
Total Daytime Population	90,737	100.0%



		Employee Count					Count of Businesses
		0 - 50					6,997
		51 - 100					195
		101 - 200					71
		201 - 300					15
		300+					25
		Total					7,303
2-Digit SIC	Business Description	0-50 Emp.	51-100 Emp.	101-200 Emp.	201-300 Emp.	300+ Emp.	Total

01	Agricultural Production-Crops	8	0	0	0	0	8
02	Agricultural Production-Livestock	32	0	0	0	0	32
07	Agricultural Services	94	0	0	0	0	94
08	Forestry	25	0	0	0	0	25
09	Fishing, Hunting & Trapping	2	0	0	0	0	2
10	Metal Mining	1	0	0	0	0	1
12	Coal Mining	1	0	1	0	1	3
13	Oil & Gas Extraction	3	0	0	0	0	3
14	Mining & Quarrying-Nonmetallic Minerals	2	0	0	0	0	2
15	Building Construction-Gen Contractors	194	1	0	0	0	195
16	Heavy Construction Except Building	31	1	0	0	0	32
17	Construction-Special Trade Contractors	291	3	0	0	0	294
20	Food & Kindred Products Mfrs	15	3	1	0	0	19
21	Tobacco Products Mfrs	0	0	0	0	0	0
22	Textile Mill Products Mfrs	2	0	0	0	0	2
23	Apparel & Other Finished Products Mfrs	5	0	0	0	0	5
24	Lumber & Wood Prods Except Furntr Mfrs	18	0	0	0	0	18
25	Furniture & Fixtures Mfrs	4	0	0	0	0	4
26	Paper & Allied Products Mfrs	2	1	1	0	0	4
27	Printing Publishing & Allied Industries	34	0	0	0	0	34
28	Chemicals & Allied Products Mfrs	9	0	1	0	0	10
29	Petroleum Refining & Related Inds Mfrs	3	0	0	0	0	3
30	Rubber & Miscellaneous Plastics Mfrs	0	1	0	0	0	1
31	Leather & Leather Products Mfrs	2	0	0	0	0	2
32	Stone Clay Glass & Concrete Prods Mfrs	10	2	0	0	0	12
33	Primary Metal Industries Mfrs	3	1	2	0	0	6
34	Fabricated Metal Products Mfrs	12	0	0	0	0	12
35	Industrial & Commercial Machinery Mfrs	23	1	0	0	0	24
36	Electronic & Other Electrical Equip Mfrs	7	2	0	0	0	9
37	Transportation Equipment Mfrs	5	0	0	0	0	5
38	Measuring & Analyzing Instruments Mfrs	8	0	0	0	0	8
39	Miscellaneous Manufacturing Inds Mfrs	32	0	0	0	0	32
40	Railroad Transportation	1	0	0	0	0	1
41	Local/Suburban Transit & Hwy Passenger	22	2	0	0	1	25
42	Motor Freight Transportation/Warehouse	100	0	1	0	0	101
43	United States Postal Service	17	0	1	0	0	18
44	Water Transportation	4	0	0	0	0	4
45	Transportation By Air	14	1	0	0	0	15
46	Pipelines Except Natural Gas	1	0	0	0	0	1
47	Transportation Services	49	1	1	0	0	51
48	Communications	68	1	0	0	0	69
49	Electric Gas & Sanitary Services	37	1	1	0	0	39
50	Wholesale Trade-Durable Goods	132	0	0	0	1	133
51	Wholesale Trade-Nondurable Goods	109	0	1	0	0	110
52	Building Materials & Hardware	42	1	2	0	0	45
53	General Merchandise Stores	27	2	6	1	0	36
54	Food Stores	76	13	3	0	0	92
55	Automotive Dealers & Service Stations	121	2	0	0	0	123
56	Apparel & Accessory Stores	57	1	0	0	0	58
57	Home Furniture & Furnishings Stores	73	1	0	0	0	74
58	Eating & Drinking Places	313	13	2	1	0	329
59	Miscellaneous Retail	316	0	0	0	0	316
60	Depository Institutions	38	1	0	0	0	39
61	Nondepository Credit Institutions	16	0	0	0	0	16
62	Security & Commodity Brokers	23	0	0	0	0	23
63	Insurance Carriers	12	0	0	0	0	12
64	Insurance Agents Brokers & Service	82	0	0	0	0	82
65	Real Estate	252	3	0	0	0	255

67	Holding & Other Investment Offices	113	0	0	0	0	113
70	Hotels Rooming Houses & Camps	194	7	3	0	1	205
72	Personal Services	246	0	0	0	0	246
73	Business Services	907	1	0	0	1	909
75	Auto Repair Services & Parking	178	0	0	0	0	178
76	Miscellaneous Repair Services	95	0	0	0	0	95
78	Motion Pictures	26	1	0	0	0	27
79	Amusement & Recreation Services	113	6	1	1	1	122
80	Health Services	527	10	8	5	5	555
81	Legal Services	91	0	0	0	0	91
82	Educational Services	235	68	17	1	2	323
83	Social Services	185	6	3	2	2	198
84	Museums Art Galleries & Gardens	25	0	0	0	0	25
86	Membership Organizations	260	1	0	0	0	261
87	Engineering & Accounting & Mgmt Svcs	478	5	1	0	3	487
88	Private Households	0	0	0	0	0	0
89	Miscellaneous Services Nec	93	0	0	0	0	93
91	Executive, Legislative, And General Government, Except Finance	136	7	1	1	3	148
92	Justice, Public Order, And Safety	74	7	2	0	1	84
93	Public Finance, Taxation, And Monetary Policy	4	0	0	0	0	4
94	Administration Of Human Resource Programs	50	6	6	2	2	66
95	Administration Of Environmental Quality And Housing Programs	50	9	4	0	0	63
96	Administration Of Economic Programs	31	2	1	0	1	35
97	National Security And International Affairs	6	0	0	1	0	7
99	Nonclassifiable Establishments	0	0	0	0	0	0



All estimates, projections or forecasts in this model are subject to errors, including statistical error, error due to the subjective nature of some data, error due to changes in demographics, error based on lagging competitor information or growth data, and error due to factors that are not included in the model. The user assumes all risk of reliance on this information.

GROW WITH US.

1-888-
2BUXTON

buxton@buxtonco.com

www.buxtonco.com

Buxton