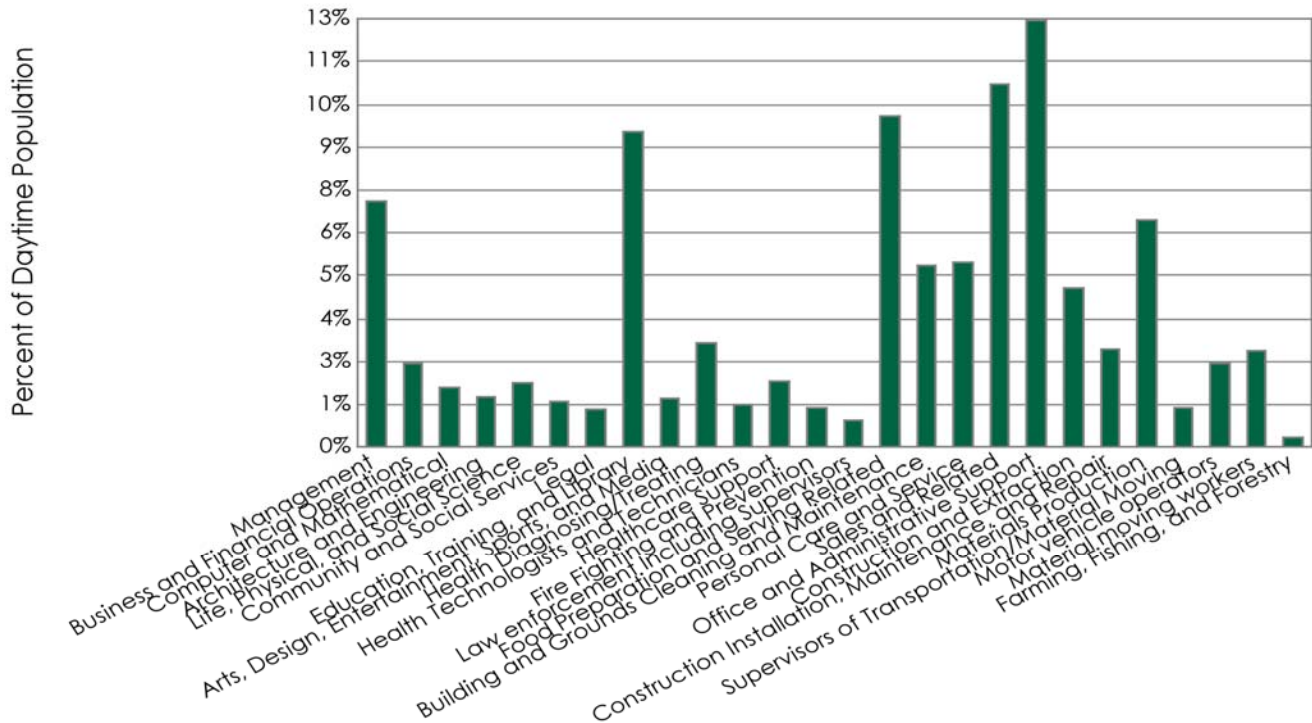


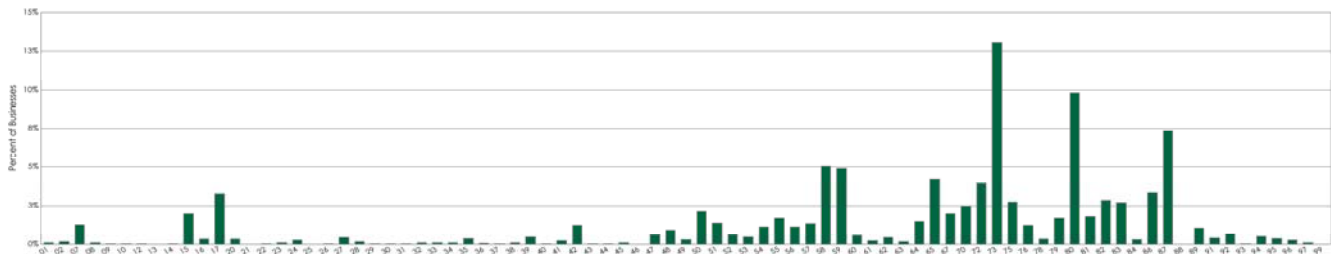
Segment	Count	Percent
Management	3,497	7.1%
Business and Financial Operations	1,214	2.5%
Computer and Mathematical	845	1.7%
Architecture and Engineering	715	1.5%
Life, Physical, and Social Science	926	1.9%
Community and Social Services	641	1.3%
Legal	534	1.1%
Education, Training, and Library	4,504	9.2%
Arts, Design, Entertainment, Sports, and Media	690	1.4%
Health Diagnosing/Treating	1,506	3.1%
Health Technologists and Technicians	594	1.2%
Healthcare Support	948	1.9%
Fire Fighting and Prevention	554	1.1%
Law enforcement Including Supervisors	369	0.8%
Food Preparation and Serving Related	4,736	9.7%
Building and Grounds Cleaning and Maintenance	2,598	5.3%
Personal Care and Service	2,639	5.4%
Sales and Related	5,183	10.6%
Office and Administrative Support	6,091	12.4%
Construction and Extraction	2,274	4.6%
Construction Installation, Maintenance, and Repair	1,403	2.9%
Materials Production	3,244	6.6%
Supervisors of Transportation/Material Moving	550	1.1%
Motor vehicle operators	1,202	2.5%
Material moving workers	1,386	2.8%
Farming, Fishing, and Forestry	134	0.3%
Total Daytime Population	48,977	100.0%



		Employee Count					Count of Businesses
		0 - 50					4,179
		51 - 100					93
		101 - 200					39
		201 - 300					6
		300+					11
		Total					4,328
2-Digit SIC	Business Description	0-50 Emp.	51-100 Emp.	101-200 Emp.	201-300 Emp.	300+ Emp.	Total

01	Agricultural Production-Crops	4	0	0	0	0	4
02	Agricultural Production-Livestock	7	0	0	0	0	7
07	Agricultural Services	55	0	0	0	0	55
08	Forestry	5	0	0	0	0	5
09	Fishing, Hunting & Trapping	2	0	0	0	0	2
10	Metal Mining	1	0	0	0	0	1
12	Coal Mining	1	0	0	0	0	1
13	Oil & Gas Extraction	0	0	0	0	0	0
14	Mining & Quarrying-Nonmetallic Minerals	1	0	0	0	0	1
15	Building Construction-Gen Contractors	84	1	0	0	0	85
16	Heavy Construction Except Building	14	1	0	0	0	15
17	Construction-Special Trade Contractors	139	2	0	0	0	141
20	Food & Kindred Products Mfrs	11	3	1	0	0	15
21	Tobacco Products Mfrs	0	0	0	0	0	0
22	Textile Mill Products Mfrs	1	0	0	0	0	1
23	Apparel & Other Finished Products Mfrs	4	0	0	0	0	4
24	Lumber & Wood Prods Except Furntr Mfrs	12	0	0	0	0	12
25	Furniture & Fixtures Mfrs	0	0	0	0	0	0
26	Paper & Allied Products Mfrs	1	1	0	0	0	2
27	Printing Publishing & Allied Industries	19	0	0	0	0	19
28	Chemicals & Allied Products Mfrs	7	0	1	0	0	8
29	Petroleum Refining & Related Inds Mfrs	2	0	0	0	0	2
30	Rubber & Miscellaneous Plastics Mfrs	0	1	0	0	0	1
31	Leather & Leather Products Mfrs	1	0	0	0	0	1
32	Stone Clay Glass & Concrete Prods Mfrs	5	0	0	0	0	5
33	Primary Metal Industries Mfrs	3	1	1	0	0	5
34	Fabricated Metal Products Mfrs	4	0	0	0	0	4
35	Industrial & Commercial Machinery Mfrs	15	1	0	0	0	16
36	Electronic & Other Electrical Equip Mfrs	2	1	0	0	0	3
37	Transportation Equipment Mfrs	1	0	0	0	0	1
38	Measuring & Analyzing Instruments Mfrs	5	0	0	0	0	5
39	Miscellaneous Manufacturing Inds Mfrs	21	0	0	0	0	21
40	Railroad Transportation	1	0	0	0	0	1
41	Local/Suburban Transit & Hwy Passenger	8	2	0	0	0	10
42	Motor Freight Transportation/Warehouse	53	0	1	0	0	54
43	United States Postal Service	1	0	1	0	0	2
44	Water Transportation	1	0	0	0	0	1
45	Transportation By Air	5	0	0	0	0	5
46	Pipelines Except Natural Gas	0	0	0	0	0	0
47	Transportation Services	26	0	1	0	0	27
48	Communications	40	1	0	0	0	41
49	Electric Gas & Sanitary Services	13	1	0	0	0	14
50	Wholesale Trade-Durable Goods	91	0	0	0	0	91
51	Wholesale Trade-Nondurable Goods	59	0	1	0	0	60
52	Building Materials & Hardware	24	1	2	0	0	27
53	General Merchandise Stores	13	2	6	0	0	21
54	Food Stores	43	5	2	0	0	50
55	Automotive Dealers & Service Stations	72	2	0	0	0	74
56	Apparel & Accessory Stores	48	1	0	0	0	49
57	Home Furniture & Furnishings Stores	58	1	0	0	0	59
58	Eating & Drinking Places	208	9	1	1	0	219
59	Miscellaneous Retail	212	0	0	0	0	212
60	Depository Institutions	25	1	0	0	0	26
61	Nondepository Credit Institutions	11	0	0	0	0	11
62	Security & Commodity Brokers	20	0	0	0	0	20
63	Insurance Carriers	7	0	0	0	0	7
64	Insurance Agents Brokers & Service	65	0	0	0	0	65
65	Real Estate	180	3	0	0	0	183

67	Holding & Other Investment Offices	86	0	0	0	0	86
70	Hotels Rooming Houses & Camps	103	2	2	0	0	107
72	Personal Services	169	0	0	0	0	169
73	Business Services	564	1	0	0	1	566
75	Auto Repair Services & Parking	118	0	0	0	0	118
76	Miscellaneous Repair Services	54	0	0	0	0	54
78	Motion Pictures	14	1	0	0	0	15
79	Amusement & Recreation Services	69	4	1	0	0	74
80	Health Services	415	4	4	0	2	425
81	Legal Services	78	0	0	0	0	78
82	Educational Services	87	26	6	1	2	122
83	Social Services	111	2	1	2	1	117
84	Museums Art Galleries & Gardens	13	0	0	0	0	13
86	Membership Organizations	142	1	0	0	0	143
87	Engineering & Accounting & Mgmt Svcs	312	3	1	0	3	319
88	Private Households	0	0	0	0	0	0
89	Miscellaneous Services Nec	47	0	0	0	0	47
91	Executive, Legislative, And General Government, Except Finance	15	1	1	0	1	18
92	Justice, Public Order, And Safety	27	1	2	0	0	30
93	Public Finance, Taxation, And Monetary Policy	1	0	0	0	0	1
94	Administration Of Human Resource Programs	17	2	2	1	0	22
95	Administration Of Environmental Quality And Housing Programs	14	3	0	0	0	17
96	Administration Of Economic Programs	9	1	1	0	1	12
97	National Security And International Affairs	3	0	0	1	0	4
99	Nonclassifiable Establishments	0	0	0	0	0	0



All estimates, projections or forecasts in this model are subject to errors, including statistical error, error due to the subjective nature of some data, error due to changes in demographics, error based on lagging competitor information or growth data, and error due to factors that are not included in the model. The user assumes all risk of reliance on this information.

GROW WITH US.

1-888-
2BUXTON

buxton@buxtonco.com

www.buxtonco.com

Buxton